

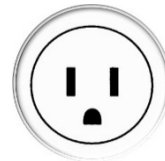
Back Bar Coolers

- 3 sizes
- 2 finishes
- sliding or swing doors



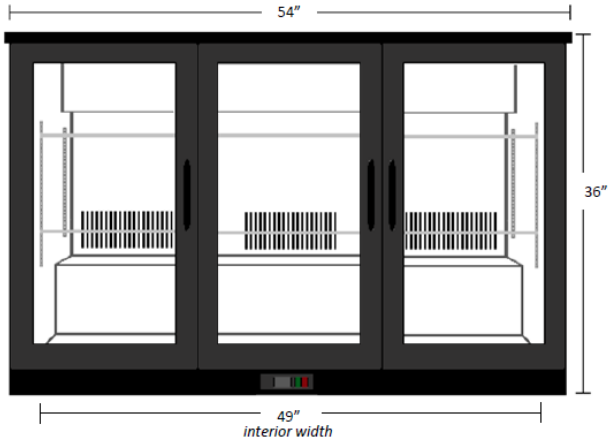
FEATURES

Textured black exterior resists scratching.
 Stainless steel or embossed aluminum interior.
 Lockable tempered glass doors - black or stainless steel.
 LED interior lighting with separate power switch.
 2 adjustable leveling feet in front.
 R600a environmentally friendly hydrocarbon refrigerant.
 Digital controller with automatic defrost programming.
 ETL Listed and conforms to NSF Std. 7.
 Standard 15 amp plug.



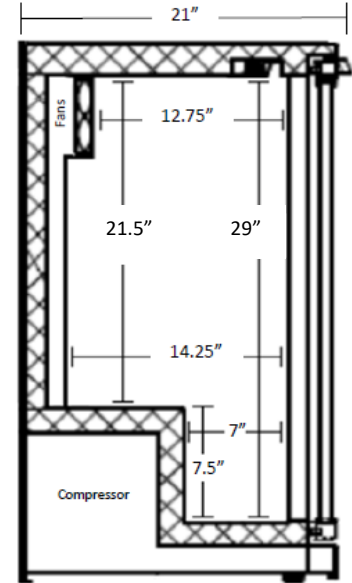
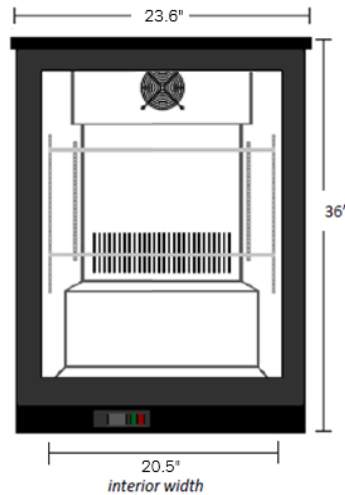
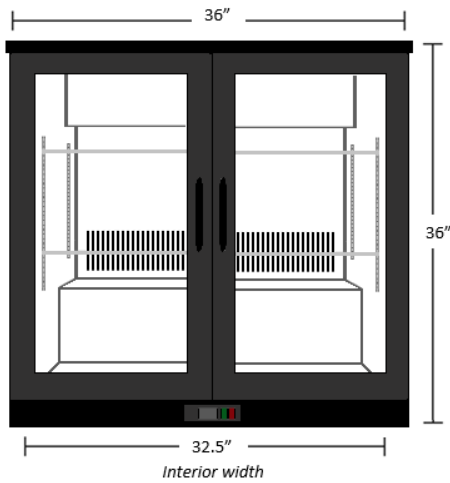
This equipment is intended for the storage and display of bottled or canned products. This display refrigerator is not for the display of potentially hazardous foods.

Model	Doors	Exterior	HP	Amps	Volume	Width	Depth	Height
BB-A1	1	Black	1/9	1.7	4.6	24"	21"	36"
SSBB-A1	1	Stainless						
BB-A2	2	Black	1/8	1.3	7.4	36"		
BB-A2S	2 sliding	Black						
SSBB-A2	2	Stainless						
BB-A3	3	Black	1/5	11.3	54"			
BB-A3S	3 sliding	Black						
SSBB-A3	3	Stainless						



All Models

Side View - Interior



WARRANTY INFORMATION

1 Year Full Parts & Labor

3 Year Part Replacement Warranty

5 Year Part-Only Warranty on Compressor

For warranty service, contact service@ironmountainrefrigeration.com or call 833-734-8880.

Your warranty...

- is not supported outside the continental United States
- begins on the date of purchase and are not transferable to other parties.
- does not cover damage due to misuse, abuse, accidents, alterations or improper installation.
- does not cover normal wear and tear or cosmetic imperfections not reported at delivery.
- does not cover the loss of product or income due to equipment malfunction.

*Placing equipment outdoors, using it to store hazardous materials or modifying the equipment in any way voids all warranties.