

PEAKCOLD®

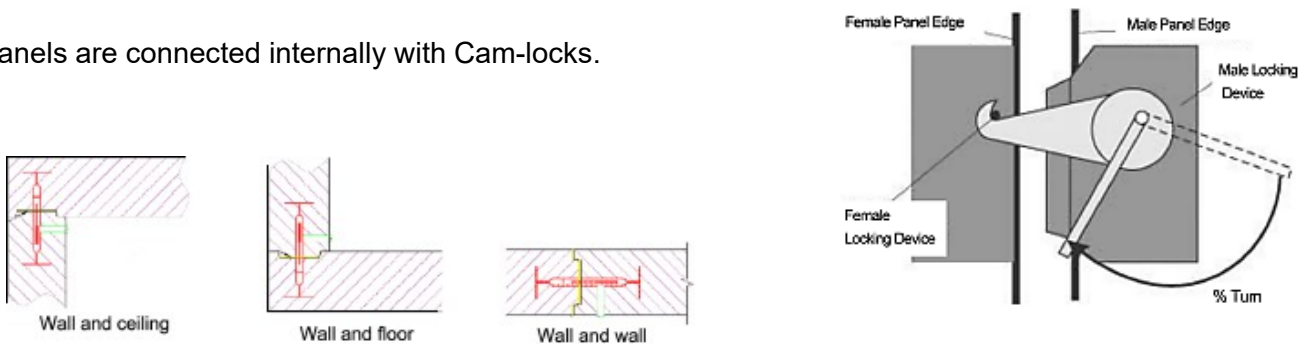
Walk In Freezer

8 x 8

- Temperature Range: -4 to 5°F
- Volume: 530 Cubic Feet (15 Cubic Meters)
- Voltage: 220/60/1
- Compressor: Tecumseh – 1.75 HP
- R404 Refrigerant
- 4.7" PU Panels with Galvanized Steel Reinforcement
- 8' Ceiling Height
- 39" W x 78.5" H Hinged Door
- Floor Panels Included
- Wall Mounted Monoblock Refrigeration Unit
- 20W LED, Anti-Fog Light
- Pressure Balancing Vent

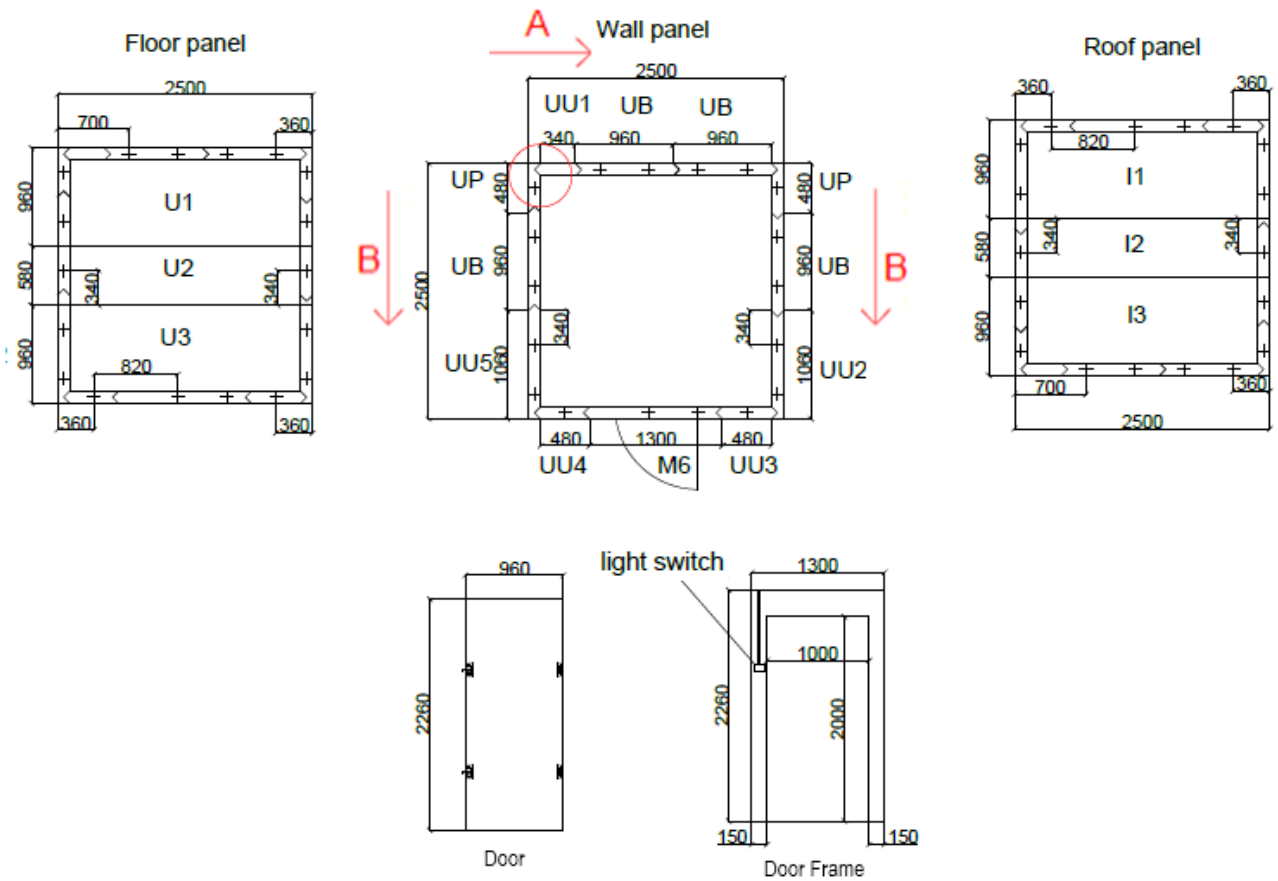
PANEL ASSEMBLY

Panels are connected internally with Cam-locks.



Assemble floor panels first, followed by wall panels. Assemble wall panels starting at circle and continue in the direction of arrows. Add door frame then roof panels. Apply included sealant at all joints.

WIF-8X8 PANELS				
	Label	Length	Width	QTY
FLOOR & ROOF	U1, U3, I1, I3	98.4	37.8	4
	U2, I2	98.4	22.8	2
WALL	UB	89	37.8	4
	UU1	89	13.4	1
	UU3	89	19	1
	UU4	89	19	1
	UP	89	19	2
	UU2, UU5	89	41.7	2
DOOR FRAME	M6	89	51.2	1



Monoblock Refrigeration Unit Installation

